
The Gristmill Gazette

Jerusalem Mill Village
Newsletter
Fall 2020



2811 Jerusalem Rd., Kingsville, MD

www.jerusalemill.org

410-877-3560

Scheduled Events

Sunday, October 25th, Fairy Tales Scavenger Hunt is canceled due to the pandemic.

Saturday, November 14th, 8 AM – 2 PM, semi-annual Yard Sale. We'll have a wide variety of household goods, books, DVDs, tools, equipment, toys, hardware, supplies, etc., mostly things we did not have at the September yard sale. If you have any items to donate, please call the Visitor Center at 410-877-3560 to arrange for drop-off, or simply bring them on the 14th. Please, no chemicals, clothing, food, towels or bedding. Most items in the yard sale will not be pre-priced. Take whatever you want, and make a cash donation in whatever amount you think is appropriate. Tables will be set up across the ball field to accommodate extensive social distancing. Masks are strongly encouraged. 100% of the proceeds go toward the maintenance, repair and daily operations of the Jerusalem Mill Village. Come help us make up for some of the lost revenue due to the pandemic.

Saturday, November 14th, 9 AM – Noon, Second Saturday Serve volunteer day. Help us with a wide variety of tasks throughout the village. All tools, materials, equipment and safety gear will be provided. We'll meet on the porch of the General Store. Everyone is invited.

Sunday, December 6th, Christmas in the Village event has been canceled, but the village will be decorated in keeping with our annual tradition. Feel free to stroll the grounds or drive by to see our festive decorations. Some buildings may be open to the public, based on CDC guidelines at the time.

In the Spotlight:



Milestone Anniversaries!

October 28th marks the 25th anniversary of the dedication, ribbon-cutting ceremony and official opening of the Jerusalem Mill Visitor Center – Museum, the first building in the village to be opened to the public, after two years of renovation. As stated by Ranger Earl Copenhaver, Gunpowder Falls State Park Manager, in a letter dated September 28, 1995, "The celebration, which begins at 9:30 a.m., October 28th, will honor the people who made this important project possible...In the 18th and 19th centuries, Jerusalem Mill was the center piece for a thriving Quaker settlement on the banks of the Little Gunpowder Falls, now the dividing line between Harford and Baltimore counties." One only needs to compare pictures of the mill as it looked in 1985 to how it looks today to see what an incredible accomplishment this has been.

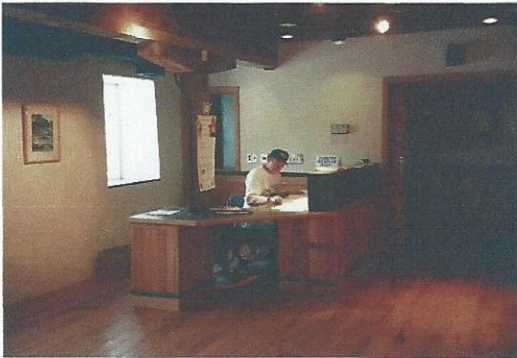


Grist mill south wall – 1985



Grist mill south wall - 2015

The opening ceremony in 1995 was the culmination of ten years of hard work and perseverance accomplished through a partnership between the Friends of Jerusalem Mill (FOJM) and the Maryland Department of Natural Resources. It all started with the vision of the founder of FOJM, Harry Sanders, who responded to a plea from his son, Scott, to save the crumbling buildings in the village. Harry formed FOJM in 1985 and worked tirelessly to obtain the support from politicians, local residents and the Department of Natural Resources to preserve the village, starting with the grist mill that first opened for business in 1772 and remained in operation for 189 years. After 10 years of planning, organizing, reconstruction and restoration, using original timbers from the 18th century, the mill once again came to life to serve the local community and beyond.



A lot more planning, research, artifact acquisition, and curatorial work had to be accomplished in preparation for that grand opening. The photo on the left was taken well before the ribbon-cutting ceremony. Seated at the desk is the village's first Curator, Chris Scovill, working on a design to convert a portion of the mill's first floor into a Visitor Center – Museum. Starting with a large, empty room, except for the desk seen here, Chris set out to acquire artifacts and memorabilia that commemorate the village's enduring history and its impact on local and foreign economies, since "White Silk Flour"

manufactured in this mill was delivered to the port of Baltimore where it was shipped all over the world. Chris took this blank slate and designed and built a Visitor Center – Museum that would endure for generations to come, and would entertain and inform hundreds of thousands of visitors from 43 countries over the 25 years.

Today the Visitor Center – Museum displays actual photographs and paintings of village buildings during various time periods, artifacts found throughout the village during restoration, an animated model of the grist mill, a scale model of the Jericho Covered Bridge, a "touch station" for children to identify wildlife, an exhibit of cooper tools, two of the original eight millstones, videos and slide shows, and much more. A complete set of two millstones are also located in front of the mill (often mistaken for a well). For a limited period of time we have also added a special Suffrage display to commemorate the 100th anniversary of the ratification of the 19th amendment to the Constitution, providing voting rights to women.

We had tentatively planned a 25-year grand reopening of the Visitor Center – Museum for this month.

We had also planned a 35-year celebration for the Friends of Jerusalem Mill at the 2020 Spring Dinner last May, with a lifetime achievement recognition for Harry Sanders at the dinner, but these events have been postponed until 2021 at the earliest, when we can safely gather in a large group.

Here are some other notable anniversaries this quarter:

- Rebeckah [Sackett] Lee was born 275 years ago, in November 1745. In 1767, Rebeckah Sackett married David Lee, who built and operated the grist mill beginning in 1772. Rebeckah and David had five children, at least four of whom were born in Jerusalem Mill Village – Hannah (1770), Mary (1774), Rebeckah (1777), Ralph Sackett (1780), and Sarah (1789). Hannah was apparently born in their original home in Bucks County, PA, just before moving permanently to our village. Being the only male, Ralph inherited the mill property when David died in 1816.
- The “Miller’s House” was built 250 years ago. Over the years this little stone building behind the mill was used for a variety of purposes. It may have been temporarily used as a residence for the mill builders, but it later became a shop, initially to make gun stocks and assemble rifles for the American Revolution (according to oral tradition), then as a Cooper Shop for making barrels, and a cannery for making cider. It was later converted into a tenant house. One of the last families to live in the building was the Ewing family, a family that had 5 children before they outgrew that tiny house and moved next door to what is now called the Carriage House. One of the 5 children literally born in the smaller house was a boy, and his parents hadn’t decided on a name until he was born, so they finally opted to name him after the inscription on the front of the mill. He was named David Lee Ewing. Who could have guessed that more than 80 years later David would become a docent in our Visitor Center – Museum, and would enjoy giving people tours of his boyhood home?
- 2020 is also the 175th anniversary of the construction of the Springhouse, located just east of the general store. Made of stone and built above a natural spring, it has cool water flowing through the “floor” of the springhouse, which keeps the inside temperature at a constant 50 degrees, cool enough to store perishables for a few days until consumed.



Pandemic Impacts

The Coronavirus pandemic has had a tremendous impact on Jerusalem Mill Village. Perhaps the most obvious impact is an economical one, with a significant reduction in sponsorships, memberships and cash donations, as typical generosity was replaced with uncertainty of the long-term impact on local businesses, jobs, personal finances, etc. Compounding the issue is the fact that our buildings have been closed to the public and our living history program and the majority of our special events have been canceled since mid-March, and will probably remain so through the end of the year. Thanks to the generosity of Maryland CARES, the Drescher Foundation, the Harford County Cultural Arts Board, and a generous anonymous donor, we have been able to meet the majority of our 2020 financial obligations, in spite of the reduced donations.

As indicated in our “Scheduled Events” article on page 1, most of our events for the rest of the year have been canceled (except for the Yard Sale and Second Saturday Serve events). Some buildings may be opened on a very limited basis, pending the availability of volunteers and the continued use of masks and social distancing. The blacksmith shop will be opened most Saturdays and Sundays from 1:00 to 4:00, with a smith demonstrating the craft. The Visitor Center – Museum will also be opened on a very limited basis, and the general store will occasionally have a historian available to discuss the history of the store.



Although most of our buildings have been closed to the public, our dedicated volunteers have continued to work hard to repair, maintain and preserve the village for the enjoyment and education of our visitors. They've completed projects like the weekly grounds maintenance, cleared the Carriage House back yard, repaired and painted the Miller's House garden fence and maintained the garden, repaired and painted rail fences, reorganized the general store, installed new displays in the Visitor Center – Museum and updated existing, performed trail maintenance throughout the Gunpowder Falls State Park, completed the chicken coop (which will be used as a "classroom" for our visiting schools), inventorying and cataloging the contents of the Jerusalem Mansion, secured the electrical system and plumbing in the Carriage House, eliminated basement flooding in the Carriage House, a variety of research and curatorial projects, and much, much more. Pictured on the far left is Bryce Knoll,

Eagle Scout candidate who led Troop 877 in the completion of the "Chicken Coop".

Jerusalem Mill Village in the News

With many people out of work or spending fewer hours at work because of the pandemic, and many more people just feeling isolated because of social distancing, health officials have recommended people enjoy the great outdoors rather than staying closed up in their homes, and a lot of people have taken that advice to heart. WJZ TV ran a segment on the unprecedented numbers of people visiting Maryland state parks during the pandemic, and Jerusalem Mill Village was highlighted in the video that accompanied the news report. You can view a portion of the report, and see an aerial view of the village at the link following this newsletter article. Like the rest of the park, our village has experienced a significant increase in visitors, overflowing our parking lot, with many people taking liberties by parking in non-designated areas, often posing a safety risk to traffic and pedestrians.

The absence of available wedding and reception venues has also impacted our village as more wedding parties and photographers visit our village for outdoor photography sessions. While we appreciate that our village is recognized as a great destination for outdoor activity and it presents a perfect setting for wedding, graduation, birthday and other special event photography sessions, it also puts a strain on our resources at a time when our donations, memberships and sponsorships have been significantly reduced by the effects of the pandemic. If you're having professional photographs taken in the village, please encourage the photographer to make a donation to our maintenance, repair and restoration fund so we can continue to provide the perfect setting. Cash contributions can be placed in a donation can in front of the mill. Checks can be mailed to Friends of Jerusalem Mill, P.O. Box 237, Kingsville, MD 21087. Donations can also be made through PayPal, by visiting our web site at www.jerusalemill.org.

You can view the WJZ TV video segment by cutting and pasting the following URL in your web browser: <https://baltimore.cbslocal.com/2020/10/05/despite-coronavirus-pandemic-maryland-park-service-sets-visitor-record/>

Protecting the Environment

Friends of Jerusalem Mill has partnered with the Gunpowder Valley Conservancy (GVC) by providing a location for the GVC to plant 225 trees in and around the village this year, with more planned in the Spring of 2021. As their name suggests, the mission of the GVC is to preserve and restore the lands and waterways of the Gunpowder watershed. As part of their mission, they acquire grants to purchase trees to plant throughout the watershed, then recruit volunteers to help plant and maintain the trees. According to the GVC website, "Trees and forests are essential to healthy ecosystems as they reduce stormwater runoff by capturing and storing rainfall in the canopy and releasing water into the atmosphere. Tree roots and leaf litter create soil conditions that promote the infiltration of rainwater into the soil, helping to replenish our groundwater supply and maintain streamflow during dry periods." The benefits of tree planting include diversion of stormwater runoff, decrease in erosion and stabilization of streambanks, control of invasive plants, improvement of air quality, the provision of a habitat for wildlife, and an increase in property values.

Trees planted at Jerusalem Mill this year include Beech, Black Oak, Eastern Red Cedar, Loblolly Pine, Red Bud, Sassafras, Sugar Maple, Atlantic Cedar, Black Locust, Flowering Dogwood, Northern Red Oak, Red Maple, Scarlet Oak, Swamp White Oak, Black Cherry, Chestnut Oak, Fringetree, Pignut Hickory, River Birch, Silver Maple, and Sycamore, all of which are native to Maryland. The final planting for 2020 is October 24th. For more information on the Gunpowder Valley Conservancy, visit their web site at <https://gunpowdervalleyconservancy.org/>.



Gunpowder Valley Conservancy
Bridging People, Land Preservation and Waterway Restoration Since 1989

We thank the Gunpowder Valley Conservancy for this tremendous opportunity to improve our environment. Special thanks to Mark McDonald for working with the GVC on behalf of Friends of Jerusalem Mill to make this happen!

Meet Our Volunteers

Each quarter we try to introduce you to our volunteers. As a non-profit charitable organization, with no paid staff, we greatly appreciate our dedicated volunteers, and we want to share their stories with you. In this edition, we'll introduce you to our four newest volunteers.

Sean Lee is a recent retiree, after spending 39 years in ministry, the last 31 years of which he served as a chaplain in the U.S. Army. He first discovered Jerusalem Mill Village in 1996, and has found the buildings, location, artifacts and narratives that make up the village truly fascinating. Sean says that "volunteering with FOJM gives me an opportunity to help maintain and preserve the wonderful buildings and grounds for visitors and posterity." In the village he assists with grounds maintenance and a variety of other maintenance projects. Sean is interested in his Lee family genealogy (so far, no link to miller David Lee!) and in American history in general. He also enjoys flyfishing, gardening, hiking, Blacksmithing, and offering spiritual direction.

A 40-year resident of the local area, **Mary Lou Walker** is another one of our retired teachers, having taught German and math for 34 years, and later taught English as a Second Language (ESL) at the Community College of Baltimore County, and Czech language for adults. She often hiked the trails leading from the village, and at times sat upon the rocks and corrected student papers. She also brought students to do trail maintenance to earn service credits toward graduation. Mary Lou says she volunteers at Jerusalem Mill because "There is a good combination of physical and mental

challenge involved, and I get to use organizational and research skills that I already have, but learn something new as I go, too... The people I have met among the Friends of Jerusalem Mill are welcoming and encouraging." Mary Lou is helping with a variety of research and curatorial projects throughout the village. Her husband, John, also volunteers in the village (introduced in our Spring 2020 edition).

Dave Langrehr's interest in volunteering at Jerusalem Mill started when he was hiking the trails and got into a conversation with someone at the bank barn, and they mentioned the 2nd Saturday volunteer days open to all volunteers. Dave is a long-time resident of Kingsville, and enjoys helping to preserve our national treasures. Dave has worked for years in the medical field, as a Certified Athletic Trainer, orthotic fitter, and in medical sales. He also enjoys woodworking, stonework, landscaping and antiquing, and he's an avid local sports fan. Dave is also assisting with grounds maintenance and other projects.

Joining us in September was **Rebecca Weber**, owner of Still Life Gallery in Ellicott City, which specializes in fine art conservation and art restoration. She is an art consultant and appraiser, and provides volunteer art therapy at Shepherd Pratt. She is also the Chair of Exhibitions and a lecturer at Howard County Center for the Arts for the past 8 years. Rebecca has a Bachelor of Arts degree in Visual Studies from the University of Maryland, with a minor focus in History and post studies in archeology. She has done art curation in Berlin, United Arab Emirates, New York and Miami, and has served as an archeological volunteer on the Hippos-Sussita Project on the east shore of the Sea of Galilee in Israel, and the Baltimore Hebrew Congregation origins on Fleet Street in Baltimore. Rebecca is currently assisting with inventorying and cataloging the contents of the Jerusalem Mansion, and will become a docent in the Visitor Center – Museum when we reopen. She is also interested in helping with our sponsorship program, and with planning and organizing special events.



Holiday Shopping

With the holidays quickly approaching, it's time to start thinking about shopping for gifts and other necessities. Because of the pandemic, people more than ever will be doing their shopping online, and many will be using Amazon. Did you know that just by designating Friends of Jerusalem Mill as your charity of choice, a portion of every purchase you make through Amazon will be donated to the maintenance, repair and restoration of Jerusalem Mill Village? The only difference is that you log in to Smile.Amazon.com instead of Amazon.com. When you shop at Smile.Amazon.com, you'll find the exact same prices, vast selection and convenient shopping experience as Amazon.com, with the added bonus that Amazon will donate a portion of the purchase price to Jerusalem Mill. You can use the same account on AmazonSmile that you use on Amazon.

Here's how:

To shop at AmazonSmile, simply go to Smile.Amazon.com from the web browser on your computer or mobile device. You may also want to add a bookmark to Smile.Amazon.com to make it even easier to return and continue your shopping at AmazonSmile. On your first visit to AmazonSmile, select "Friends of Jerusalem Mill Inc." as the charitable organization to receive donations from eligible purchases before you begin shopping. Amazon will remember your selection, and then every eligible purchase you make at Smile.Amazon.com will result in a donation.

100% of Amazon's donation to Jerusalem Mill will go toward the maintenance, repair and restoration of the village!

Thanks to our Sponsors

We are sincerely grateful to our sponsors for their generosity, enthusiasm, and belief in our mission! We encourage all of our visitors to patronize our sponsors' quality services and products. Please let them know that you saw their ad in this newsletter, and that you visited or contacted them because of their support to Jerusalem Mill. To inquire about sponsoring our many activities and events, [e-mail](mailto:jerusalemmill@yahoo.com) us at jerusalemmill@yahoo.com!

Welch Mechanical Designs, LLC

Designers and manufacturers of high-quality, high-precision optical systems for commercial, military and scientific applications.

1200 Technology Drive, Suite N
Aberdeen, MD 21001 410-698-3024

<https://www.wmdllc.com/>

Sunshine Grille, Bistro and Catering

Greek and American cuisine in a casually elegant atmosphere.

12607 Fork Road, Fork, MD 21051
410-592-3378

Wirtz & Daughters Garden Center

Visit us or use our delivery service for mulch, sand, soil, or stone products.

12140 Pulaski Highway, Joppa, MD 21085
410-335-1278 wirtz.kellyb@gmail.com

www.wirtzanddaughters.com

Walter G. Coale, Inc.

New Holland tractors, Mahindra tractors, Lawn care equipment, trailers and snow removal equipment for sale

2849 Churchville Rd, Churchville, MD, 21028
410-838-3500

ray@waltergcoale.com

www.waltergcoale.com

Mr. David Marks

Baltimore County Councilman

400 Washington Ave.

Towson, MD 21204

410-887-3384

davidmarks@verizon.net

It's All Fun & Games Day Camp

Everything a camp should be!

Located in the Valleybrook Country Club

1810 Valleybrook Drive, Kingsville, MD, 21087

www.funandgamescamp.com

410-879-4460

Bel Air Dental Care

2300 Belair Road, Fallston, MD 21047

410-879-8424

www.belairdental.com

Harry and Scott Sanders

Long and Foster Realtors

Bringing a heritage of quality to Baltimore and Harford County real estate.

12514 Jerusalem Road, Kingsville, MD, 21087

www.come2md.com

410-515-7400

Lassahn Funeral Home

Heather Lassahn

11750 Belair Rd, Kingsville, MD 21087

410-665-2000

hlassahn@lassahnfuneralhomes.com

www.lassahnfuneralhomes.com

Feild Family Dentistry

Gentle Dental for the Whole Family

Drs. Paul & Matt Feild, DDS, PA

12619 Harford Road, Fork, MD 21051

410-592-5420

pefdds@aol.com

www.feildfamilydentistry.com

Yox's Yard

Small engine and lawn equipment maintenance

12210 Pulaski Hwy., Bldg C

Joppa, MD 21085 410-977-5511

Yoxs.Yard@gmail.com

First Home Mortgage Corp.

Ann E. Parlang

5355 Nottingham Drive, Suite 115

Baltimore, MD 21236

apalrang@firsthome.com

www.firsthome.com/loanofficers/ann

410-336-2667

Lehnhoff's Supply, LLC

Pick-up or delivery of natural stone, mulch, firewood, gravel, sand, top soil, and more.

2708 Belair Rd.

Fallston, MD 21047

www.lehnhoffsupply.com

morgan.l@lehnhoffs.com

410-510-7646

Kingsville Auto Repair

Terry Heil

12116 Belair Rd., Kingsville, MD 21087

kingsvilleauto@comcast.net

www.kingsvilleautorepair.com

410-592-7172

G&M Automotive

George Majchrzak

11825 Belair Rd., Kingsville, MD 21087

gmajchrzak@gmautomotive.com

www.gmautomotive.com

443-622-9564

Corbin Fuel Co., Inc.

Greg Ensor

P.O. Box 689

Bel Air, MD 21014

www.corbinfuel.com

Alianiello Eye Care

Bob Alianiello

11824 Belair Rd.

Kingsville, MD 21087

drrga@yahoo.com

www.alianielloeyecare.com

410-593-9818

Brightview Senior Living – Perry Hall

9657 Belair Rd.

Nottingham, MD 21236

BrightviewPerryHall.com

410-529-1903

There's room
for your
listing here!

By advertising in our newsletter, your ad will reach over 1,300 homes!

To become a sponsor, send us an e-mail at jerusalemill@yahoo.com or call us on 410-877-3560.

Our concert series is supported by a grant from the Maryland State Arts Council and the Harford County Cultural Arts Board.



CELEBRATING
50 YEARS OF SERVICE
TO THE ARTS

Maryland State Arts Council Part of the Maryland Department of Commerce

Special thanks to the Harford County Special Grants, Cultural Grants, and Office of Economic Development for their continued support!

To contact the newsletter editor, send an e-mail to gristmillgazette@gmail.com, or call the Visitor Center – Museum at 410-877-3560. To add another e-mail address to our subscription list, send an e-mail to gristmillgazette@gmail.com with a subject line of "subscribe" and enter the new e-mail address in the text box. To cancel your free subscription to the Gristmill Gazette, send an e-mail to gristmillgazette@gmail.com with a subject line of "unsubscribe".